

For Lease | 26,121 SF

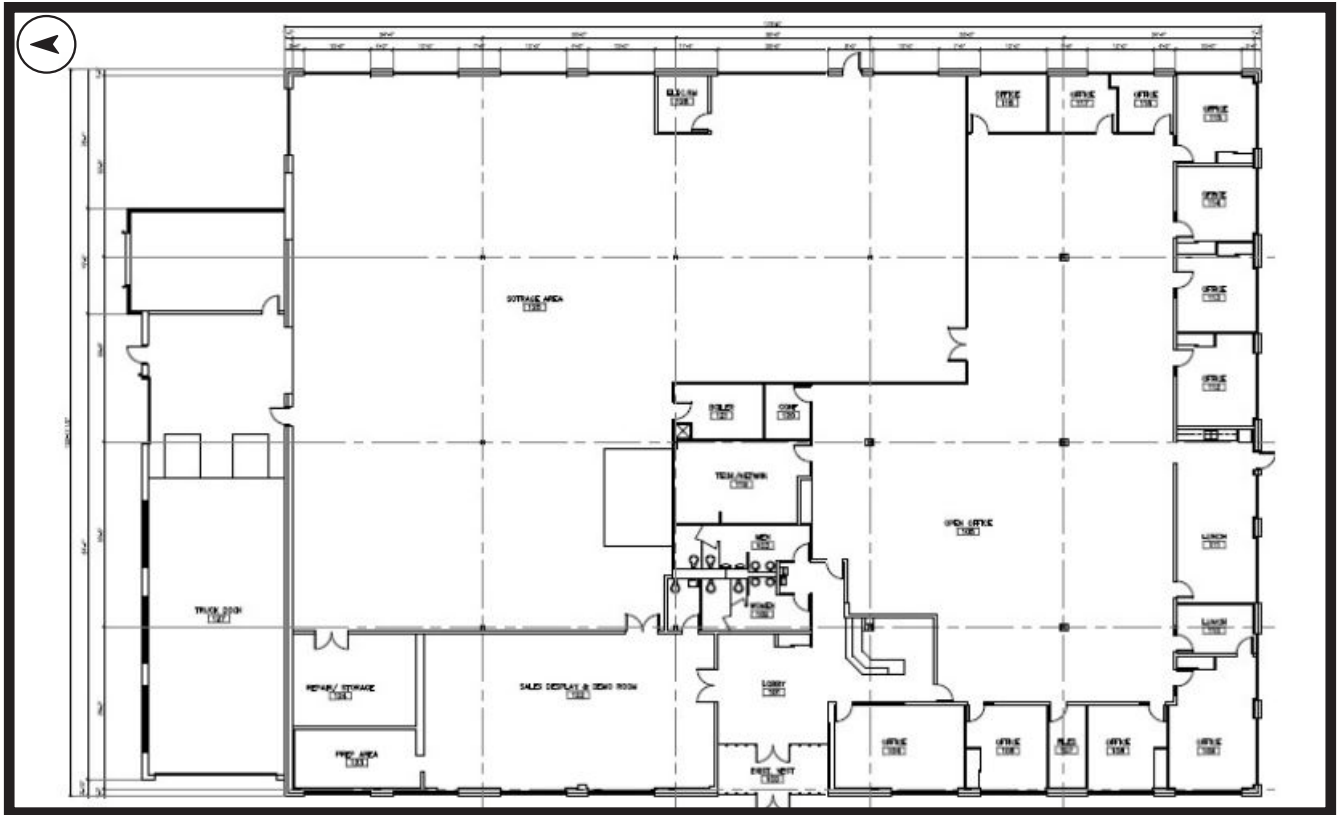
**895 American Lane  
Schaumburg, IL**



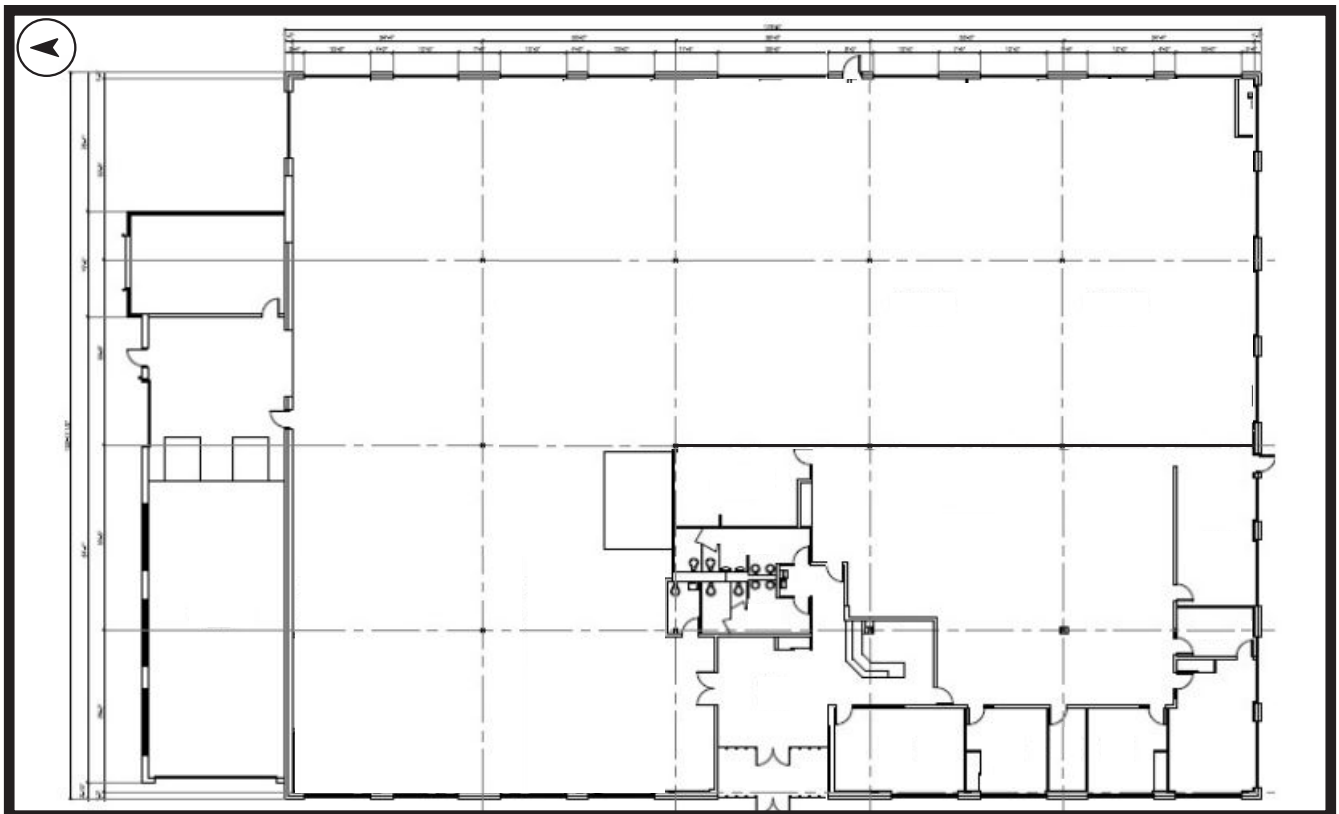
## Building Highlights

Total Building SF:	26,121 SF
Site Size:	2.25 Acres
Office Size:	+/-11,000 SF or To Suit
Year Built:	1982 (Renovated 2015)
Ceiling Height:	18'
Interior Docks:	2
Drive-in Doors:	1
Power:	800A; 120-280V; Potential to Increase
Car Parking:	+/- 85 Spots
Asking Rate:	\$12.50 PSF Gross

Building Plan

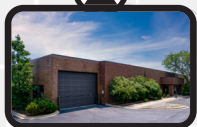
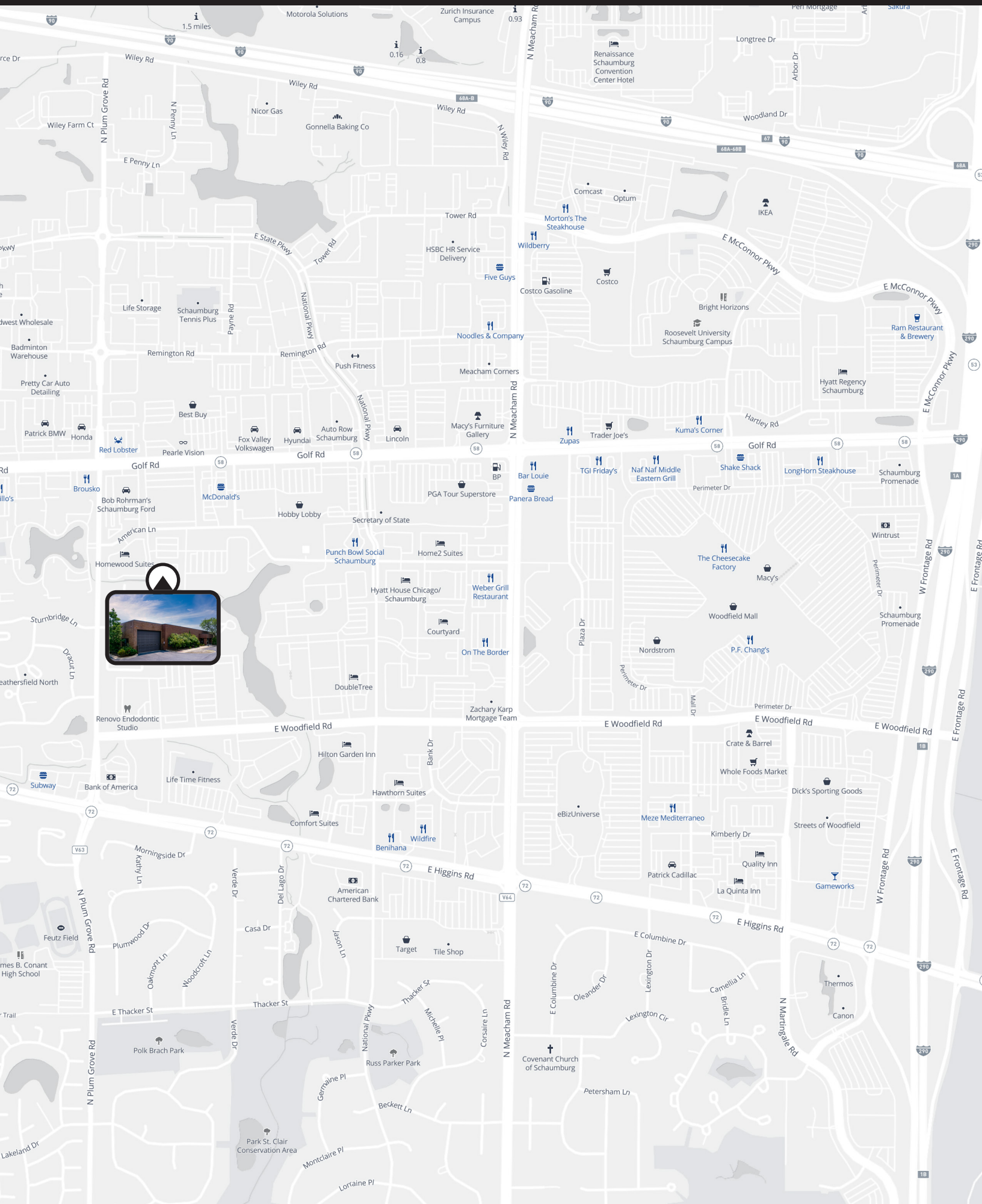


Conceptual Plan





# AREA AMENITIES



# ACCESS MAP

